

## Setting Up this Device

Connect the cables as detailed in the diagram overleaf, then follow the steps below to complete the setup of the Avaya Scopia XT5000. For details on how to use the system after setup, see the User Guide for Avaya Scopia XT5000 or the Quick Start Guide for Avaya Scopia XT5000.



# AVAYA

The Power of We™

## Avaya Scopia® XT5000

### Quick Setup Guide

#### Step 1. System Installation and Activation

1. Connect all cables to the Avaya Scopia XT5000 Codec Unit (see overleaf). Power supply must be connected after all other connections have been established.
2. Turn on the TV monitors. Monitor on HDMI1 is mandatory, monitor HDMI2 is optional.
3. Make sure the remote control has batteries installed.
4. Verify that the LED on the front panel of the Codec Unit is turned on.
5. If the codec unit does not turn on automatically, press the **OK** button on the remote control.
6. The graphical menu appears on the monitors.

#### Step 2. Product Registration

1. Open the envelope that came with the XT5000.
2. Locate the serial number and product key.
3. On a computer, open a browser and navigate to <http://licensing.radvision.com>.
4. Complete the online registration form and enter the serial number and product key. The web registration form returns a license key.
5. Write down the license key and keep it in a safe place for future use.

#### Step 3. Country and Language of Interface

1. The System Name field displays the name of this Codec Unit as displayed in a videoconference, for example:
  - **Hong Kong**, or
  - **9th Floor Conf Rm**
2. Use the remote control keypad to type the name. Press **OK** to toggle letters or numbers and lower/upper case.
3. Select the **Country** and preferred **Language**.
4. Then select **Next**.



#### Step 4. Graphics and Image Setup

If all the sides of the triangles 1 and 2 are visible on your monitor, select **next**.



1. Otherwise, press **1** to adjust the position of the top left corner.
2. Use the arrow keys to move the selected triangle until it is fully visible on your monitor. Press **OK** when done.
3. Press **2** to adjust the position of the bottom right corner.
4. Repeat the procedure using the arrows.
5. Press **OK** and **Next** when done.



#### Step 5. Network Settings

1. Enter your network settings. For questions about this information, consult your system administrator.
2. Then select **Next**.



#### Step 6. Gatekeeper Settings

1. Enter your **Gatekeeper** settings and your E.164 number. For questions about this information, consult your system administrator.
2. Then select **Done**.



#### Step 7. Moving the Camera

1. On the general screen, navigate to **Control Camera** using the arrow keys and press **OK**.
2. Use the arrow keys to move the camera to the preferred position.
3. Repeat the procedure if you have a second camera installed.
4. Press **Back** when done.



Your Scopia XT5000 sets the standard for an exceptional conferencing experience. Unique simultaneous HD 1080p/60fps for live video and content and CD-quality, 20 kHz audio deliver an outstanding experience. H.264 High Profile provides ultimate bandwidth efficiency and H.264 Scalable Video Coding (SVC) offers high network error resiliency.

#### Package Content:

- Avaya Scopia XT5000 Codec Unit
- Avaya Scopia XT Premium Camera
- Avaya Scopia XT 3-ways Microphone POD
- Avaya Scopia XT Remote Control Unit
- First camera cable: 2.5m triple camera cable, including power, VISCA and DVI-D/HDMI
- DVI-I to VGA converter
- Cable LAN 4mt
- Cable HDMI M/M, 2.5M
- Power Supply and power cable
- 3-ways Microphone POD cable
- Remote Control Batteries





The Power of We™

## Avaya Scopia XT5000

### Quick Hardware Setup

#### Package Content:

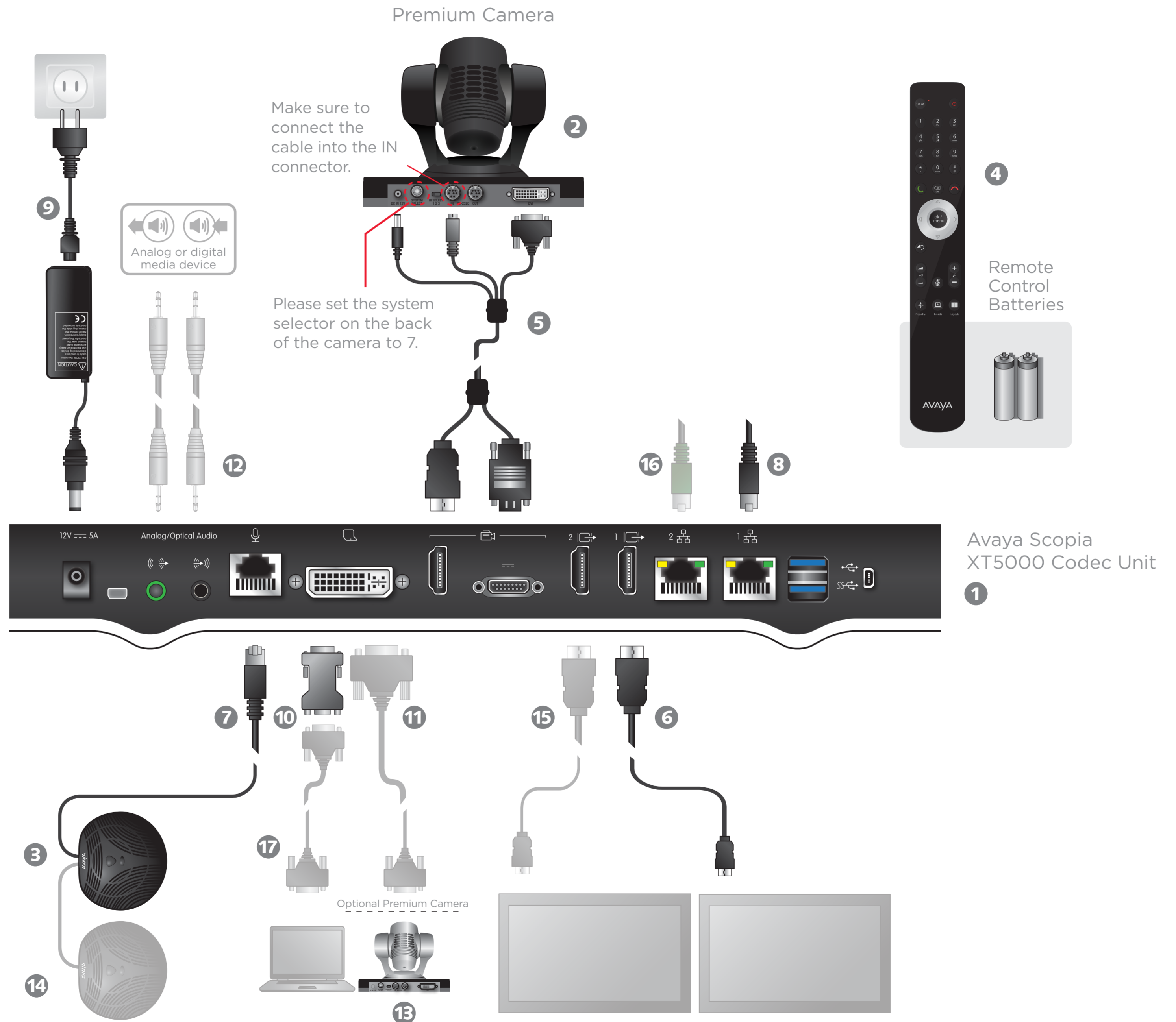
- 1 Codec Unit
- 2 Avaya Scopia XT Premium Camera
- 3 3-way Microphone POD
- 4 Remote Control Unit and Batteries
- 5 First camera cable
- 6 HDMI Cable
- 7 3-way Microphone POD cable
- 8 Ethernet Cable for LAN, 4m
- 9 Power Supply and Power Cable
- 10 DVI-I to VGA converter for PCs with VGA output only

#### Avaya Optional - Not Included Accessories

- 11 DVI to DVI Cable
- 12 Audio Cable. Both sockets on the unit are dual purpose. They accept either an analog 3.5mm MiniJack cable or an optical Toslink cable with a Toslink mini-plug adapter. Optical digital audio format is S/PDIF
- 13 Optional Premium Camera to be connected to DVI input
- 14 Optional 2nd 3-way microphone POD

#### Non-Avaya

- 15 HDMI Cable for Mon2
- 16 Ethernet Cable for LAN
- 17 VGA cable



**CAUTION:** Make sure all units are switched off whenever connecting or disconnecting devices.